

Oldham: A Co-operative Council

APSE

25th April, 2013

Cllr Barbara Brownridge

Cabinet Member for Co-operatives and Community Development



Oldham
Council

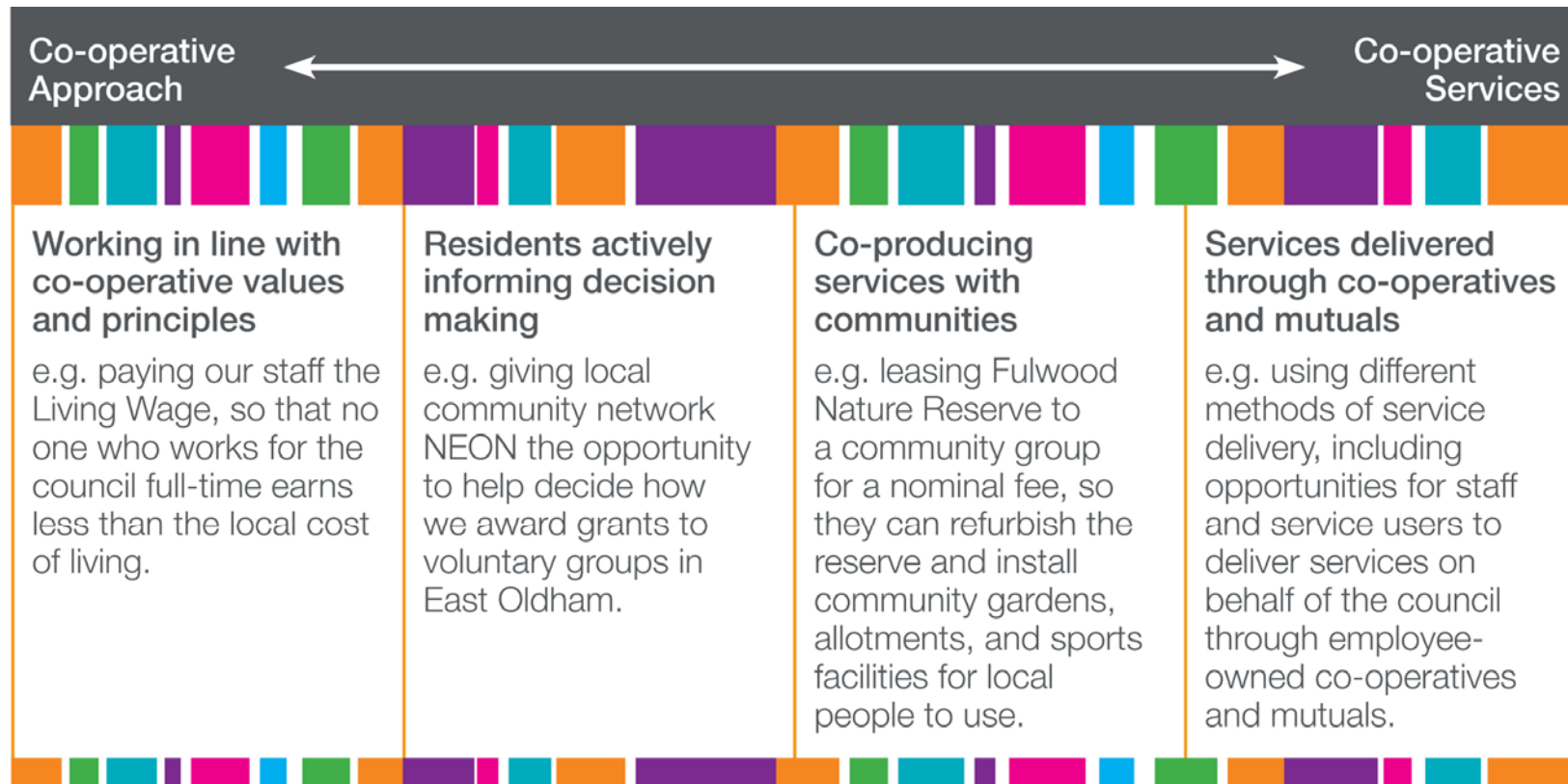
Why did we choose to become a Co-operative Council?

- Unprecedented challenges:
 - budget reductions
 - economic crisis
 - rising demand for services
 - sweeping legislative reform ranging from welfare reform to localism and health and social care
- This means we can't keep doing things the same way – nor can we simply salami slice
- A co-operative approach can offer a sustainable and positive response to the challenge we and our communities face

What does a Co-operative Council mean for Oldham?

- It's not just about mutualising services or outsourcing to co-operatives – it's a whole-system approach to everything we do
- Emphasising self-help and responsibility – supporting communities to be more resilient
- Engaging with communities to design and deliver things in partnership
- Championing local democracy and community leadership
- Making the most of the resources we have by securing extra social and economic value through the way we run our business

Oldham's Spectrum of Co-operative Working



Co-operative Commission

- Wide range of participants – voluntary/private sector, RSL's, Youth Councillors etc.
- Established the Co-operative Charter – a value set that underpins everything.
- Helped to inform the Council's Ethical Framework which guides our work.
- Now working collectively on issues where co-operation can be a part of the solution e.g. wellbeing.

What have we achieved so far?

Just a few of our achievements:

- Co-operative Campaigns
- Co-operative Oldham Fund
- Living Wage
- Co-operative Procurement
- Employer-Supported Volunteering
- Co-operative Commission
- Ethical Framework
- Devolution to districts
- Love Where You Live

Questions? Comments?

Contact our policy team: Policy@Oldham.gov.uk

Contact me: Barbara.Brownridge@Oldham.gov.uk